



FLEXIBLE JUMBO MOBILE MICROPHONE

JX-5G

INSTRUCTION MANUAL

Space Electric Corporation
OSAKA, JAPAN

FLEXIBLE MOBILE MICROPHONE JX-5G

INSTRUCTIONS

Thank you very much for your purchase of "ADONIS" Flexible Jumbo Mobile Microphone Model JX-5G. To enjoy this unit satisfactorily, please read the instructions carefully and we hope you can enjoy using this microphone for a long time.

FEATURES:

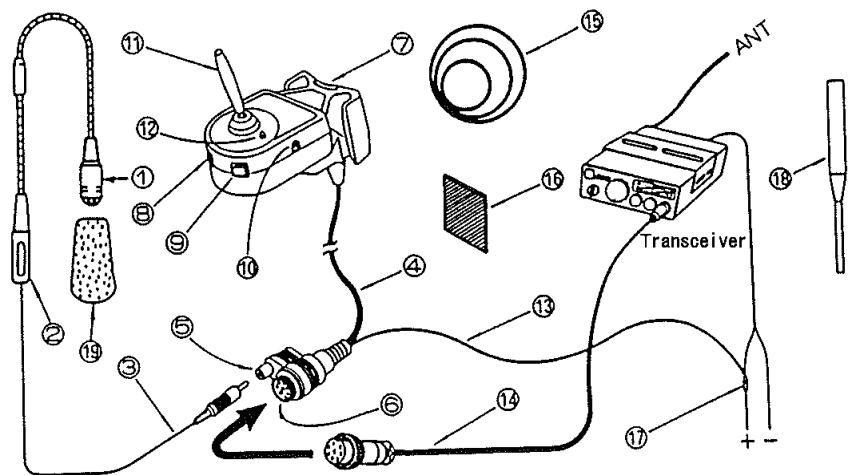
- The Uni-Directional Microphone serves to reduce the background noise.
- The flexible gooseneck is the withstand vibration type.
- Transmitting/Receiving Selector Switch is mountable with the gear-shift lever for safety driving.
- TX/RX Switch Box is provided with UP/DOWN Switches and LED Transmitting Indicator.
- Variable microphone sensitivity due to Output Level Adjusting volume built-in.
- Provided with Non-Modulation Prevention Circuit with alarm sound.
- Useable with various kinds of Transceiver by connecting with conversion cables optionally available.
- Useable with microphone cable equipped with power feeding line ("D" series cables).

PART NAMES: (Fig. 1)

- ① Microphone with Flexible Pipe
- ② Mounting Bracket
- ③ Mic. Cord with RCA(Pin) Plug
- ④ Input/Output Cord
- ⑤ Mic. Input RCA(Pin) Jack
- ⑥ 8P Interconnecting Jack
- ⑦ Control Switch Box
- ⑧ UP Switch (Blue)
- ⑨ DOWN Switch (Grey)
- ⑩ Output Adjusting volume
- ⑪ PTT (TX/RX) Switch
- ⑫ LED TX Indicator
- ⑬ Power Feeding Line
- ⑭ Conversion Cable(Optional)

Accessories:

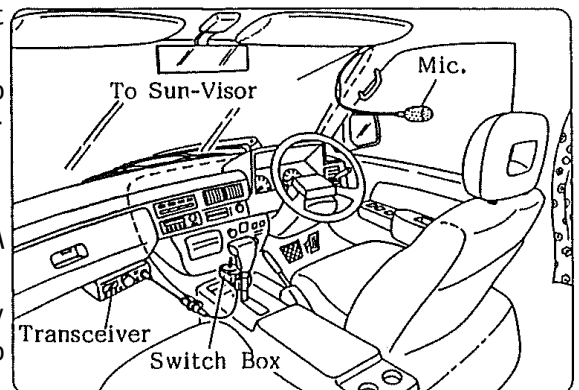
- ⑮ Rubber Bands(ϕ 40, ϕ 60, ϕ 75)
- ⑯ Rubber Plate
- ⑰ Connector for Power Feeding Line
- ⑱ Driver for Output Adjusting volume
- ⑲ Windscreen(Sponge)



HOW TO MOUNT AND CONNECT: (Fig. 5 Example of Mounting)

1. Fasten the Mounting Bracket② to Sun-visor, or, mount onto convenient place. (See Fig. 5)
2. Mount the Control Switch Box⑦ with Rubber Band⑮ to the gear-shift lever. In case of need, place the Rubber Plate⑯ in-between the control box and shift lever. (See Fig. 2)
3. Plug the Mic. Cord with RCA Plug③ into Mic. Input RCA (Pin) Jack⑤ connected with Input/Output Cord.
4. Connect the suitable conversion cable⑭, optionally available, to 8P interconnecting Jack⑥ connected to Input/Output Cord④ and transceiver correctly.

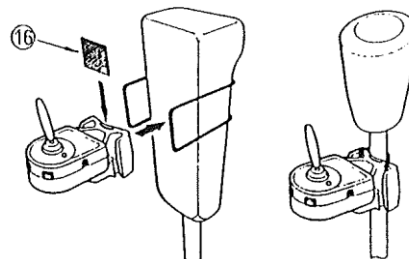
(The Conversion Cable has the direction for connecting.)



5. The Power Feeding Line⑬ should be connected to the (+)side power source of transceiver with Power Feeding Connector⑰ provided. (See Fig. 3)

HOW TO MOUNT THE Switch Box⑦: (Fig. 2)

1. Fix the Switch Box to gear-shift lever with the rubber band strongly.
2. If not stable, insert the rubber plate⑯ in-between switch box and shift-lever.



HOW TO CONNECT POWER FEEDING CONNECTER⑰: (Fig. 3)

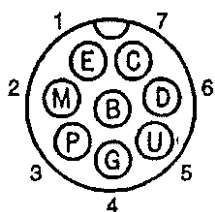
1. Put the(+) side power of transceiver and Mic. Power cord ⑬ on grooves in the connector.
2. Fix them tentatively.
3. Press the insulation cover down to be locked with players.



8P ADONIS TYPE TERMINAL CONNECTION

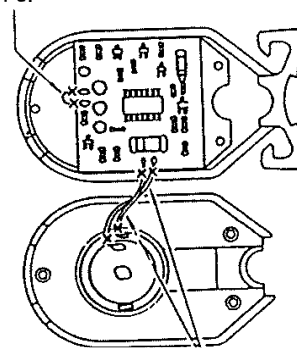
(8P Interconnecting Jack⑥) (Fig. 4)

1	E: Earth (Mic. Signal)	Shield
2	M: Mic. Signal	Yellow
3	P: PTT (press to talk)	Red
4	G: Earth (for PTT)	Purple (Blue)
5	U: Up	Green
6	D: Down	White
7	C: U/D Common	Orange
8	B: DC Power Feeding (+)	Gray



HOW TO CANCEL THE NON-MODULATION PREVENTION CIRCUIT (Fig. 6)

Remove the 3 screws on the bottom of switch box and modify it as below. Cut the jumpering wire for cancelling the Non-Modulation Prevention Circuit.

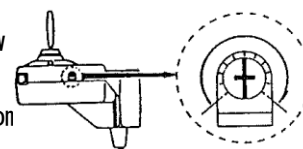


Cut the Yellow Wires for cancelling the Alarm Circuit.

HOW TO USE:

- Set the PTT switch⑪ to "T" for transmitting and to "R" for receiving. The LED TX indicator⑫ will light up when TX condition.
- The UP switch⑧ and the DOWN switch⑨ are the same functions as those of the microphone provided with transceiver. (Please read the instruction book for details about this function.)
- Keep the distance of 10cm or less between mouth and microphone.
- The microphone output level is factory-preset to optimum Level.
- But, when you need optimum modulation to your transceiver, please readjust it. Rotate the adjusting volume⑩ to clockwise with screw driver provided carefully under monitoring by local station. (The maximum rotation angle is 100° each to the right and left side from center position. Please make adjustment carefully and slowly.)

(Fig7)



NON-MODULATION PREVENTION CIRCUIT:

In case you set the PTT switch⑪ to transmitting mode without any intention. the condition of Non-Modulation will continue and it may cause trouble for other stations. TO prevent such a condition, the alarm circuit built-in will activate after 2.5 minutes continuous transmitting with alarm sound. After 30 seconds sounding, the condition will be reset to receiving mode automatically. But after changing into receiving mode automatically, the alarm sounds out and LED Indicator also lights up without stopping and going out. Please refer to the (Fig. 6) for cancelling the Non-Modulation Prevention Circuit and Alarm sound.

RE FEEDBACK NOISE:

When transmitting with high power, there are possibilities to have abnormal modulation interference with offensive sound and other noise. In such a case, the bad matching between antenna and coaxial cable may cause the problems i.e., the Standing Wave effects onto microphone cable. To get better condition, please do not place the microphone cable in parallel to the antenna coaxial cable. Also please check the SWR between antenna and transceiver.

CAUTIONS:

- Please do not beat the microphone when adjusting the output level and at QSO.
- Regarding the microphone interconnecting cables (Conversion Cables), please be sure to use "ADONIS" standard cables, optionally available.
- Please keep this microphone away from high temperature and moisture area.
- The design and specifications are subject to change without advance notice.

SPECIFICATIONS:

- Uni-Directional Condenser Microphone unit : 1piece
- The length of Microphone with flexible pipe : 59cm
- Microphone Cord length : 5m
- In& Output Cord : 70cm
(with 8P interconnecting Jack and RCA Jack)
- Matching Output impedance : $500\Omega \sim 100k\Omega$
- Output voltage : $0 \sim 50\text{mV (rms)}$
- Power voltage (1) Power Feeding Line (Red) : DC12~15V
- (2) "D" Series Conversion Cable : DC5~9V
- The Size of Switch Box : 44 (H) × 38 (W) × 67 (D) mm
- Weight : 400g

(ACCESSORIES ATTACHED)

- Windscreen (Sponge) Blue : 1piece
- Rubber Bands ($\phi 40$, $\phi 60$, $\phi 75$) : each 1piece
- Connector for Power Feeding Line (Red) : 1piece
- Rubber Plate : 1piece
- Driver for Output Adjusting volume : 1piece